

green impact

Green Impact for Students' Unions & Associations (GISU)

A UNESCO award-winning programme to embed environmentally and socially sustainable practice across your union or association.

All content © SOS UK 2026

2026-27



Students & Newts in Stirling SU's Community Garden

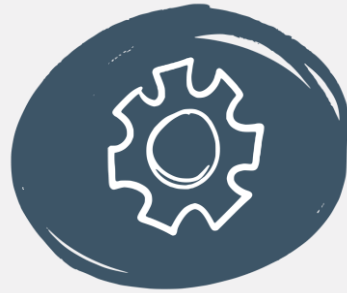
SOS UK is transforming education, so people protect the climate and nature

SOS-UK delivers the Green Impact programme across the UK

green impact



We unite people from every background, inside and outside of formal education, because protecting our earth matters to each and every one of us.



Our education system helped cause the climate and nature crisis, but now we're making it the solution - we're empowering students and educators to build a better world.



We are a not-for-profit charity so working with us is an affordable and ethical choice that can bring social value to your supply chain.



UNESCO recognise SOS UK as a global leader of education for sustainable development, and we believe that lifelong learning is an important part of that.

What is Green Impact?

Green Impact transforms organisations through our **United Nations award-winning programme** that makes **environmental and social sustainability achievable for everyone.**

We empower union staff, officers, and students to achieve ambitious sustainability goals by **bringing people together, focusing on solutions, and turning passion into action.**

The programme provides a **framework** and a **network** to **strategically support** your targets, embedding sustainability and social justice across campus, the curriculum, and wider society. We provide **opportunities to partner with other unions**, hold networking events and **share good practice** through resources and case studies.

green impact



20

Green Impact has been running for 20 years

2,288

We have supported more than 2,288 organisations to use the Green Impact model

7

Green Impact has been delivered in seven countries globally

Structure your work

Our toolkit provides a framework and breaks down sustainability work into **direct, doable actions**.

Use it to **plan** your campaigns, **monitor** success and **engage** students and staff.

Our guidance and resources make the work **easier!**

green impact

☆ PA006

Partnership & policy

Criteria

Further information

How you will be audited

Comments & evidence

Proactively collaborate and consult with Liberation Officers/groups to inform your sustainability work.



Assigned to: Katie Smith

☆ PA007

Partnership & policy

Criteria

Further information

How you will be audited

Comments & evidence

Sustainability is a category in end-of-year awards, receiving a variety of nominations covering different areas of sustainability (e.g. teaching/learning, student-led initiatives/projects/campaigns, individual sustainability champions).

GISU helps...



Bike redistribution
by Reading SU

- **Embed** sustainability in strategic plans
- Demonstrate your sustainability **progress**
- Self-reflect and **review** your own work
- **Collaborate** with other SUs
- Be **accredited** against a national benchmark and be **recognised** for your work
- **Communicate** to students what you are doing
- Hold your Union **accountable**
- **Empower** staff to understand what they can do to help

green impact



Support



Resource Bank

Guidance, templates, case studies, and webinars



Webinars

Attend live or watch back – covering every concept in sustainability you can think of!



Peer to peer

Connect through bi-monthly Forums and our GISU Teams chat



Check-ins

In early 2027 we'll be arranging a call with you to check in with progress and offer support



Ad hoc support

Send us an email and we'll help you however we can!

Optional Extras



Tailored training

Contact us for bespoke on-site or remote training - or suggestions for our next webinar!



Learning Academy

Taking part in GISU bags you a 10% discount on our learning events - including training for Course Reps and Campaign Planning workshops



Newsletter

[Sign up to our monthly newsletter](#) for all things students & sustainability!

Key Dates



- **31st July:** Toolkit available
- **23rd September:** Launch webinar
- **October-November:** Sustainability Skills Survey
- **11th January (all week):** SOS UK check-in calls
- **March:** National SDG Teach In
- **23rd April:** Toolkit submission
- **3rd – 14th May:** Audits*
- **August:** Awards Ceremony

Pricing

SOS UK is a charity,
and all our fees are
not-for-profit.

Participation level	2026-27 cost*	Information
Access to the toolkit only	£42	Access the GISU toolkit to structure your sustainability action, track your progress, and self-assess your impact. You will be listed as a participant, but you will not receive an audit or accreditation or access to the support listed.
Full programme participation and support with online audit, including high level auditor feedback	£665 for 1 year £1,200 for 2 years (10% discount)	Access the GISU toolkit as well as the support listed. You will receive an online audit to verify your accreditation level. You will receive high-level feedback on where points have been gained or lost as well as digital assets to showcase your award.
Full programme participation and support with in-person audit and in-depth feedback report	£990 for 1 year £1,785 for 2 years (10% discount)	As above, but a member of the SOS UK team will visit your union for an in-person ½ day supportive audit, providing an in-depth feedback report from their visit with ideas for improvements and next steps.

*excluding VAT

Pricing for extra support

SOS UK is a charity,
and all our fees are
not-for-profit.

Participation level	2026-27 cost*	Information
Additional award support	£295	Includes planning session with a member of the SOS UK team, additional check-in call, and pre-audit check-in.
Bespoke training	From £425	We can provide bespoke support or training. Please get in touch with your requirements for a detailed quote.
Recycled Slate Award	£32	Showcase your award with a sustainable trophy.

*excluding VAT

Sign up today using our online form!



Scan or go to:

sos-uk.org/programme-sign-up

Get in touch: gisu@sos-uk.org

green impact

