

# greenimpact

## 2023-24

# GREEN IMPACT FOR HEALTHCARE

A UNESCO award-winning programme to embed environmentally and socially sustainable practice across your teams and departments.



# CONTENTS

**green impact**

<u>Introduction</u>	3-5
<u>How it works</u>	6-8
<u>The Green Impact toolkit</u>	9-10
<u>Impact and reach</u>	11-12
<u>Benefits to your organisation</u>	13-14
<u>Costings and what is included</u>	15-20
<u>Meet the team</u>	21
<u>Contact us and links</u>	22





STUDENTS  
ORGANISING FOR  
SUSTAINABILITY  
UNITED KINGDOM

# SOS-UK IS AN EDUCATIONAL CHARITY FOCUSING ON SUSTAINABILITY

**green**impact

SOS-UK delivers the Green Impact programme across the UK.



SOS-UK supports people to learn, act and lead for sustainability. We believe that education and learning can bring about the changes needed to tackle some of the world's biggest challenges.



Alongside our work in the education sector, we have experience working with healthcare providers, museums, research institutes, housing providers, and public and private sector.



SOS-UK is a not-for-profit charity so working with us is an affordable and ethical choice that can bring social value to your organisation.



UNESCO recognise SOS-UK as a global leader of education for sustainable development, and we believe that lifelong learning is an important part of that.

Connect with us:



# WHY DO WE RUN GREEN IMPACT?



## Climate and health are inextricably linked

Climate change affects the social and environmental determinants of health and is expected to cause approx. 250,000 additional deaths per year between 2030-2050.

## Healthcare is a major contributor to the climate crisis

The NHS is responsible for 4% of England's total carbon footprint, with a huge potential for improvements in day-to-day operations to reduce the total footprint.

## Engaging with staff is key

Staff working in healthcare are becoming more aware of Net Zero targets and want to take action on climate change, but they often do not know where to start.

## Sustainable healthcare is quality healthcare

Improving the sustainability of healthcare provision can lead to higher quality patient care and satisfaction, at a lower cost. Sustainability should therefore be a priority for all areas of healthcare.



## WHAT IS GREEN IMPACT?

Green Impact is a multi award-winning sustainability learning and awards programme, designed to embed sustainable practices across organisations.

Green Impact is all about building a community of people learning about sustainability and working together to create positive change. It is tailored to your organisation to strategically support your local targets and strategies.

**IEMA** Transforming the world to sustainability

**IEMA Sustainability Impact Awards 2019**

**WINNER**



UNESCO-Japan Prize on Education  
for Sustainable Development  
Laureate 2016

**15**

Green Impact has been running for 15 years

**1,197**

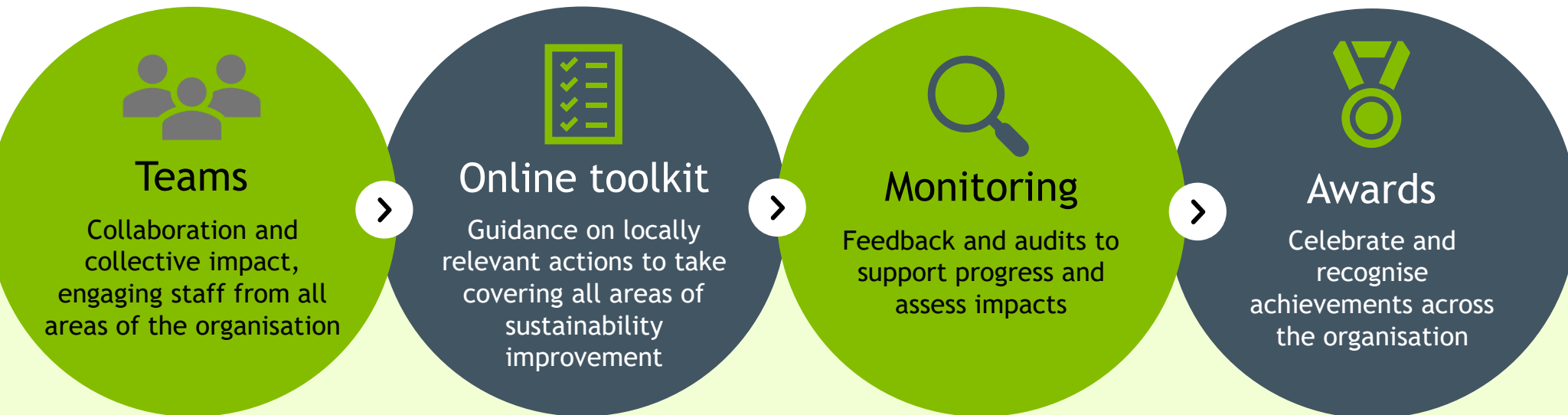
We have supported 1,197 organisations to use the Green Impact model

**7**

Green Impact has been delivered in seven countries globally

# GREEN IMPACT SUPPORTS ENVIRONMENTALLY AND SOCIALLY SUSTAINABLE PRACTICE

Green Impact suggests what staff can do in their team to support sustainability and guides them how to achieve this. It supports teams to embed your organisation's sustainability strategy or Green Plan into everyday practices, breaking down barriers to engagement.



# INTENDED OUTCOMES OF GREEN IMPACT

Staff know more about sustainability - developing widespread sustainability literacy



Staff develop a better understanding of what the organisation is doing on sustainability



Creating a community of people taking action for sustainability from across the whole organisation



Professional and academic development for staff



Teams receive recognition for their achievements and are given agency to take action

Supporting carbon savings, cost savings and waste reduction

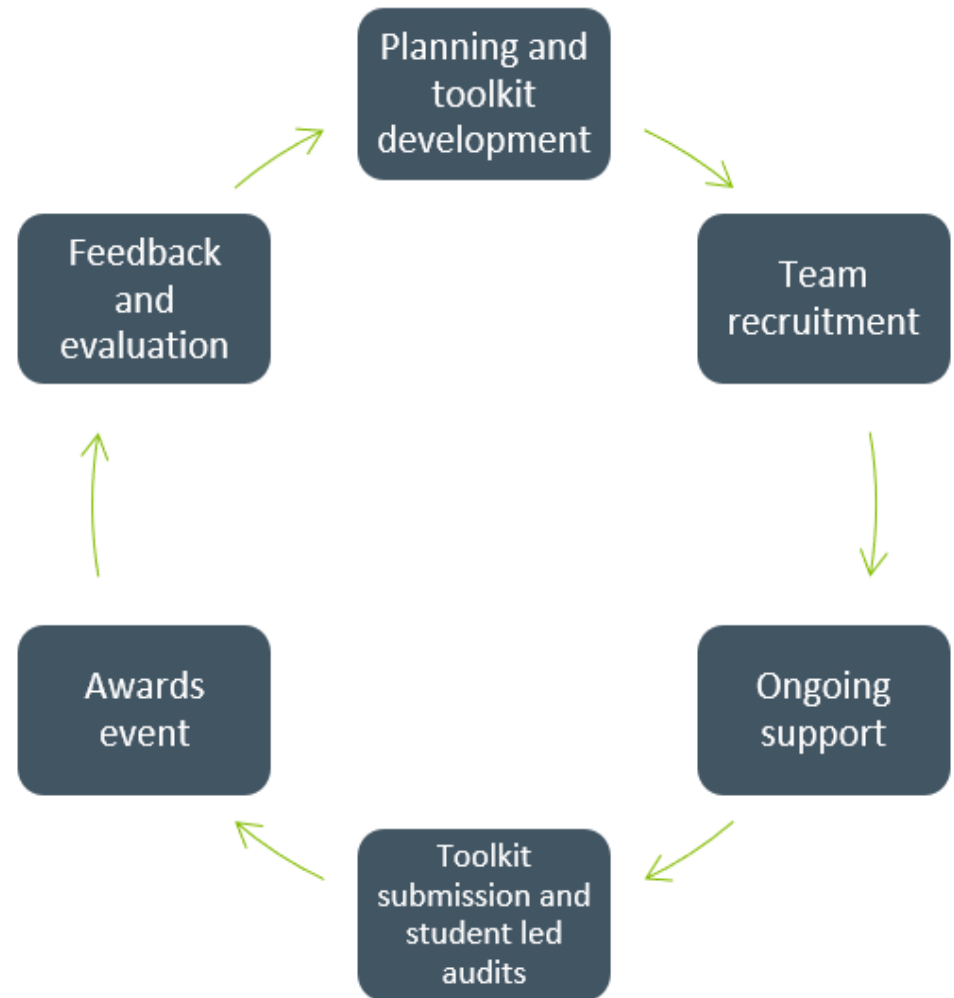
Increased support for and engagement with existing sustainability priorities, targets and initiatives

# GREEN IMPACT IS AN ANNUAL CYCLICAL PROGRAMME

Green Impact follows a six-step approach over approximately 12 months, which can be adapted to suit the needs, objectives and culture of the organisations we work with.

Green Impact is so successful in part because it responds to the local environment and offers bespoke solutions to engagement.

Our approach means that staff can engage in a flexible way around their day-to-day roles.





# THE GREEN IMPACT TOOLKIT

The toolkit will cover all aspects of sustainability. The toolkit is completely bespoke for your organisation and we will work with you to ensure the toolkit supports your targets and aligns with local and international priorities.

The criteria will be turned into an accessible, easy to use, online platform for teams to see where to start, monitor their progress, and provide evidence. We launched a brand-new toolkit software in 2023 that is more user friendly than ever before.

**Easy to follow:** Each action is tagged to make it easy for teams to filter by the most relevant actions to them, including clinical and non-clinical actions.

**Providing evidence:** Green Impact is not just a tick-boxing exercise. Teams provide comments and evidence as they go to build accountability, support reporting, and gather good practice.

**Competition and recognition:** Teams will be able to see their progress towards their award, as well as see how other teams around them are doing in the leaderboard

**Team collaboration:** Actions within the toolkit can be assigned to different members, to ensure Green Impact is a collaborative process across the whole team.

☆ 0001 **Communications**

Criteria	Further information	How you will be audited	Comments & evidence
Environmental issues, including Green Impact participation, are regularly raised at staff meetings.			

Total Points: 1

- N/A
- NOT DONE
- IN PROGRESS
- DONE

Assigned to: Kate Winters

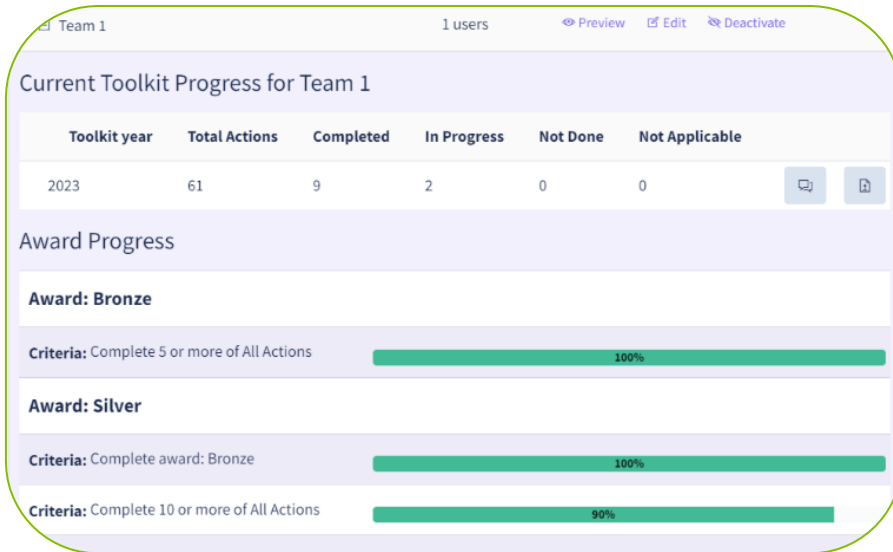
Starred Actions	Assigned Actions
☆ 0005 NO STATUS	✓ 0001 DONE
☆ 0006 NO STATUS	✓ 0002 NO STATUS
☆ 0007 DONE	✓ 0009 NO STATUS

**Awards Progress**

View your team's progress towards completing this Toolkit's awards.

- Bronze** (DONE)
  - Complete 5 or more of All Actions: 100%
- Silver** (IN PROGRESS)
  - Complete award: Bronze: 100%
  - Complete 10 or more of All Actions: 60%

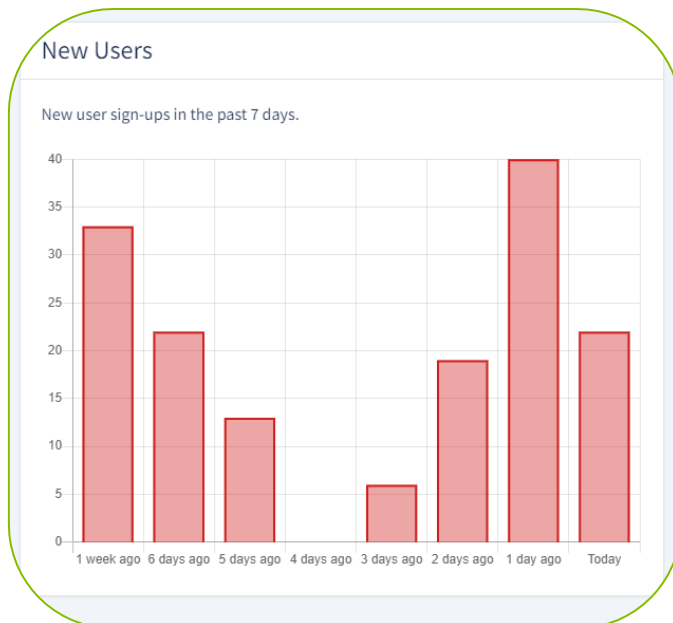
# THE GREEN IMPACT TOOLKIT (cont.)



**Live reporting:** You will be able to see your teams' progress at any time via the live admin dashboard to monitor what has been completed, and where additional support may be required. Evidence provided by teams within the toolkit can support with internal reporting on sustainability targets.

**Fully customisable site text and imagery:** Everything within the toolkit can be customised to align with your local messaging. You can also signpost to other local initiatives from within the site.

**Multi-lingual:** The toolkit can run in both Welsh and English, with users easily able to switch between the two.





# GREEN IMPACT ENGAGEMENT

Green Impact has been running for 15 years. Here's some of what we have achieved in that time...

7,857

7,857 Green Impact teams have formed across participating organisations

44,999

44,999 people have actively been part of Green Impact teams

376,371

Green Impact teams have reached 376,371 people with sustainability activities

7,718

7,718 volunteer students provided with training and development opportunities

559,901

559,901 actions completed by teams and verified by student auditors

1,000

More than 1,000 learning workshops delivered with students and staff

28,500

28,500 tonnes CO<sub>2</sub> saved (estimated from available data)

# GREEN IMPACT PARTICIPANTS INCLUDE

green impact

More than 50 organisations are taking part in Green Impact, including universities, research centres, local councils and NHS Trusts. Some of our participants this year include...



# BENEFITS TO YOUR ORGANISATION



## Tested programme

that covers the whole sustainability agenda, increasing sustainability attitudes, knowledge and behaviours of staff

## Meet your sustainability targets

without enforcing, through a completely bespoke toolkit of actions that can be linked to your Green Plan.

## Participation from the whole organisation

with tangible actions for different areas, including clinical and non-clinical.

## Improved reputation

amongst shareholders, PR, patients, league tables.

## Gives champions a tangible role

and builds community cohesion and better workplace dynamics by reducing siloed working and improving staff morale and pride.

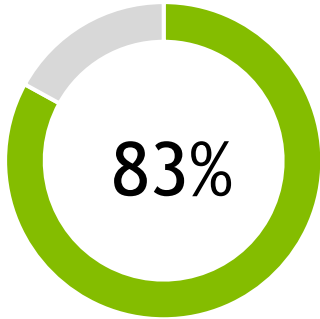
## All actions are verified

through student auditors undertaking an IEMA-approved auditor course, delivered by SOS-UK prior to conducting audits.

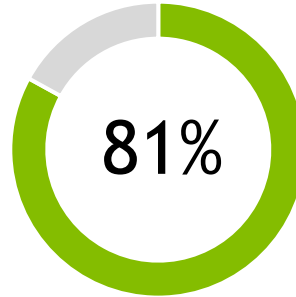
## Added capacity to your sustainability work

by engaging teams of staff, and providing learning and development around sustainability.

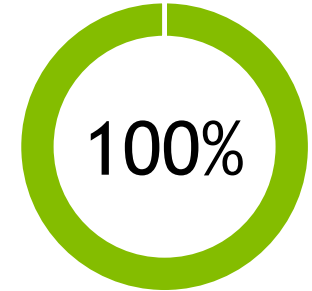
# PARTICIPANTS VIEW GREEN IMPACT POSITIVELY



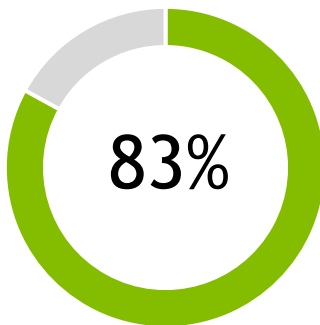
of participants know more about how to use their knowledge to make changes to their daily life



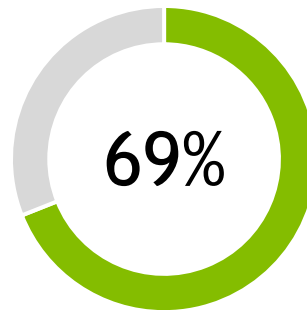
of volunteer student auditors feel the experience has positively enhanced their employability



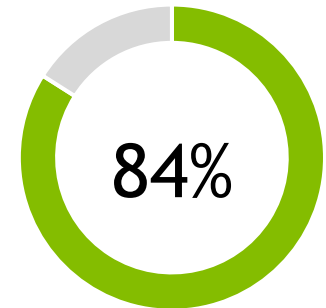
of organisations report they've seen positive changes in pro-environmental behaviour amongst staff



of participants would rate Green Impact as Good or Excellent overall



of participants identified new skills or knowledge gained as a result of taking part in Green Impact



of participants identified changes to their own habits or behaviour as a result of taking part in Green Impact



## COSTINGS

SOS-UK is a charity and our pricing model is to cover our time and resources, and is not-for-profit. For off-campus organisations, the fee varies depending on the size of your organisation, and the scope and nature of the support that will be required.

The annual cost to run Green Impact is typically between **£9,000 and £15,000 +VAT** per year.

Please get in touch for a detailed quote:  
[hello@sos-uk.org](mailto:hello@sos-uk.org) or via  
[greenimpact.nus.org.uk/contact/](https://greenimpact.nus.org.uk/contact/).

You will have a dedicated Project Manager from SOS-UK to support you with local delivery of the project, which will involve ongoing support for your local coordinator (such as a regular catch-ups) and reactive email support.

As well as overall project management, the activities and support detailed on the next two pages are included in your Green Impact programme fee, and we have a number of bolt-ons available to add to your programme (pages 17-19).

# WHAT IS INCLUDED?



## BESPOKE SUPPORT FOR TEAMS

Your Project Manager can deliver 4 bespoke support activities which can cover, but is not limited to, the below. Your Project Manager will work with you to decide the most effective support for your teams.

- In person bespoke workshops and/or online webinars on a variety of sustainability topics additional to access to our monthly Green Impact webinar series.
- Support calls for teams throughout the year to check in on progress.
- Creation of communication materials to support staff teams (posters, recorded videos, graphics, templates).
- Presentations at launch or award events to share the national context and impact of Green Impact.



# WHAT IS INCLUDED (CONT.)?



## ONLINE TOOLKIT, AUDITS, AND REPORTING

- Support to develop, review and host your bespoke Green Impact toolkit on our online system.
- Reactive technical support for toolkit users.
- Live progress dashboard and leaderboard for teams and departments, and local admin access to monitor overall progress.
- Coordination of IEMA-approved student auditor training and team audits at the end of the year to verify award levels.
- Annual report to demonstrate reach, impact and achievements.
- Monitoring and evaluation of participants and student auditors to capture attitudes, learnings and feedback from the programme.

## COMMUNICATION AND RESOURCES

- Access for team members to a series of nationally-coordinated Green Impact support events and resource banks.
- Opportunity to profile your teams and innovations through our international communications.
- Certificate templates, [digital badges](#), and award winner graphics for all Green Impact teams and student auditors.
- Centrally coordinated Special Awards to recognise local actions and impacts on an international stage.
- Opportunity to shape the strategic development of the programme and celebrate the collective achievements across the sector.
- Up to 15 sustainably sourced award trophies for teams (additional awards can be purchased upon request).

# BOLT-ONS FOR GREEN IMPACT

## Green Impact Project Assistants (GIPAs)

The Green Impact Project Assistants (GIPA) scheme provides development opportunities for local students as well as extra support for your programme. It's proven successful in many organisations both on and off-campus.

SOS-UK train students to become GIPAs and join Green Impact teams to offer support and additional resource. Through the scheme, students develop a range of transferable skills, gain experience of a professional workplace, and increase their sustainability knowledge. Green Impact Project Assistants also add capacity to your Green Impact teams and act as a link between local students and staff at your organisation.

**green impact**



Tier one	Tier two
Delivery of the initial training of your GIPAs and guidance and templates for you to support them over the year.	Everything in Tier 1 as well as two additional days of training and/or support for your GIPAs, ongoing check-ins, and a wrap-up event to support with your GIPAs careers development
<b>£820 (+VAT)</b>	<b>£2,400 (+VAT)</b>

# BOLT-ONS FOR GREEN IMPACT

## Communications support

Engagement takes time, resource and perseverance! We know the best Green Impact programmes are those that provide consistent and high-quality communications for and between teams, but many organisations don't have the resource to deliver this internally.

We've created two tiers of additional support that you can add to your programme. We will discuss with you how best to use this time to build recognition of, and engagement with, Green Impact across the organisation.

**green impact**



Tier one	Tier two
Four days of communications support, which could include the creation of monthly newsletters, social media content or 1-2-1 communications with your teams	Tier 1, plus three additional days of communications support
<b>£1,520 (+VAT)</b>	<b>£2,660 (+VAT)</b>

# BOLT-ONS FOR GREEN IMPACT

## Carbon Literacy training

This bolt-on is to upgrade one of your included support days to deliver Carbon Literacy training and certification for up to 20 staff. Running Carbon Literacy training alongside Green Impact can build local capacity and offers an exciting professional development opportunity with an externally-verified certification for learners.

Carbon Literacy is defined as: “An awareness of the carbon dioxide costs and impacts of everyday activities, and the ability and motivation to reduce emissions, on an individual, community and organisational basis.”

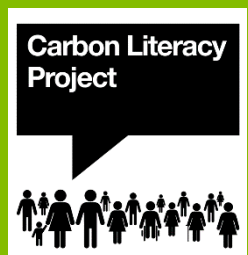
green impact

The training provides attendees with introductory science on the climate crisis, with a focus on climate justice, and the inter-related nature of carbon emissions and wider environmental concerns such as biodiversity loss.

During the training attendees will begin to develop their own plan for acting on and communicating the climate crisis. The course lasts around 12 hours and includes online training elements and self study.

This training is certified by The Carbon Literacy Project. Upon successful completion of the training, learners will be awarded a Carbon Literacy certificate and a digital badge.

**£1,650 +VAT** (for up to 20 learners)



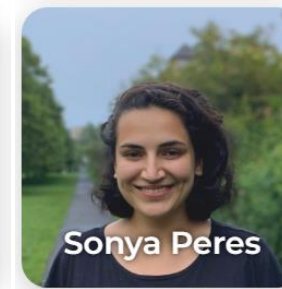
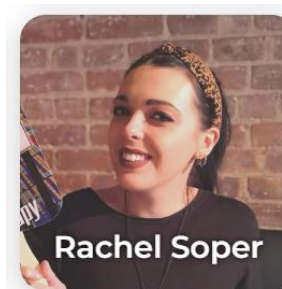
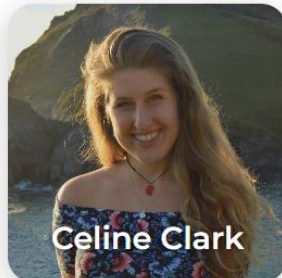
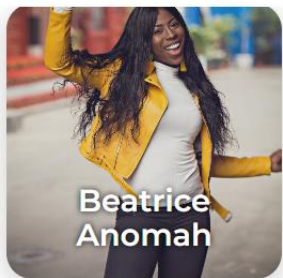
# Meet the team



SOS-UK staff represent a range of academic and professional backgrounds from education to biology, and with specialisms in communications and research.

Our staff work from home across the country or from our London office.

Read more about our staff team [on the SOS-UK website](#).





**green impact**

If you have any questions or would like to sign-up, please contact the Green Impact team on

[hello@sos-uk.org](mailto:hello@sos-uk.org)

<http://greenimpact.nus.org.uk/>



STUDENTS  
ORGANISING FOR  
SUSTAINABILITY  
UNITED KINGDOM